



GRIFFIN TOWERS

5 & 6 HUTTON CENTRE DRIVE | SOUTH COAST METRO

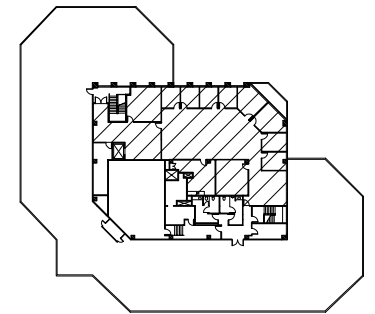
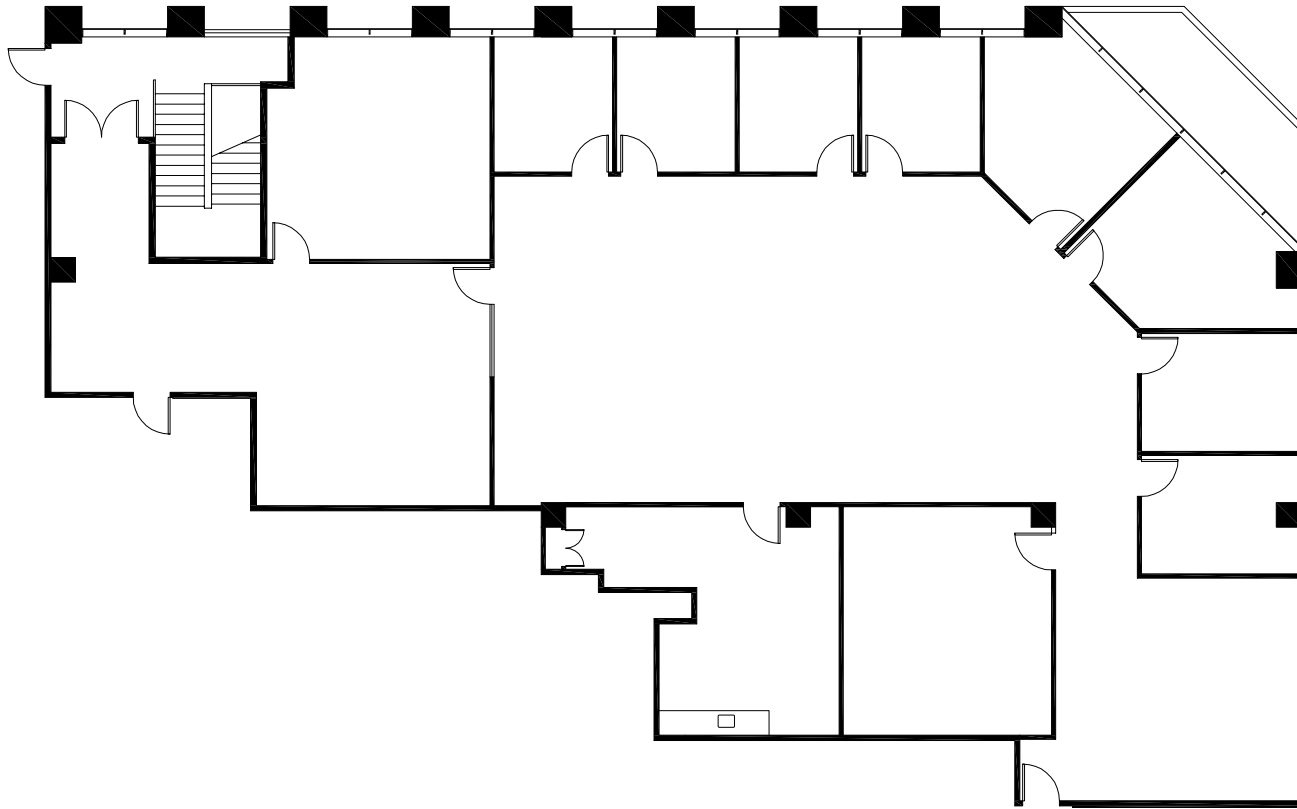
WWW.GRIFFINTOWERS.COM



Tower I: 5 Hutton Centre Drive

Suite 1400

±5,823 Rentable SF



KEY MAP



For more information, please contact:

Dean Chandler

Lic. 00833627

T 949.725.8515

dean.chandler@cbre.com

Justin Hill

Lic. 01424426

T 714.371.9230

justin.hill@cbre.com

CB Richard Ellis | Broker Lic# 00409987

3501 Jamboree Road, Suite 100

Newport Beach, CA 92660 | Fax 949.725.8545

LINCOLN
PROPERTY
COMPANY

CBRE

©2011 CB Richard Ellis, Inc. | Broker Lic. 00409987 This information has been obtained from sources believed reliable. We have not verified it and make no guarantee, warranty or representation about it. Any projections, opinions, assumptions or estimates used are for example only and do not represent the current or future performance of the property. You and your advisors should conduct a careful, independent investigation of the property to determine to your satisfaction the suitability of the property for your needs. TC/HC 0310 TEAM_CM/GRIFFIN TOWERS/FP_GRIFFINTOWERS_P.INDD