



# GRIFFIN TOWERS

5 & 6 HUTTON CENTRE DRIVE | SOUTH COAST METRO

WWW.GRIFFINTOWERS.COM

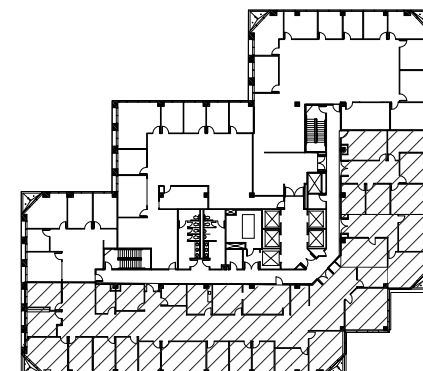
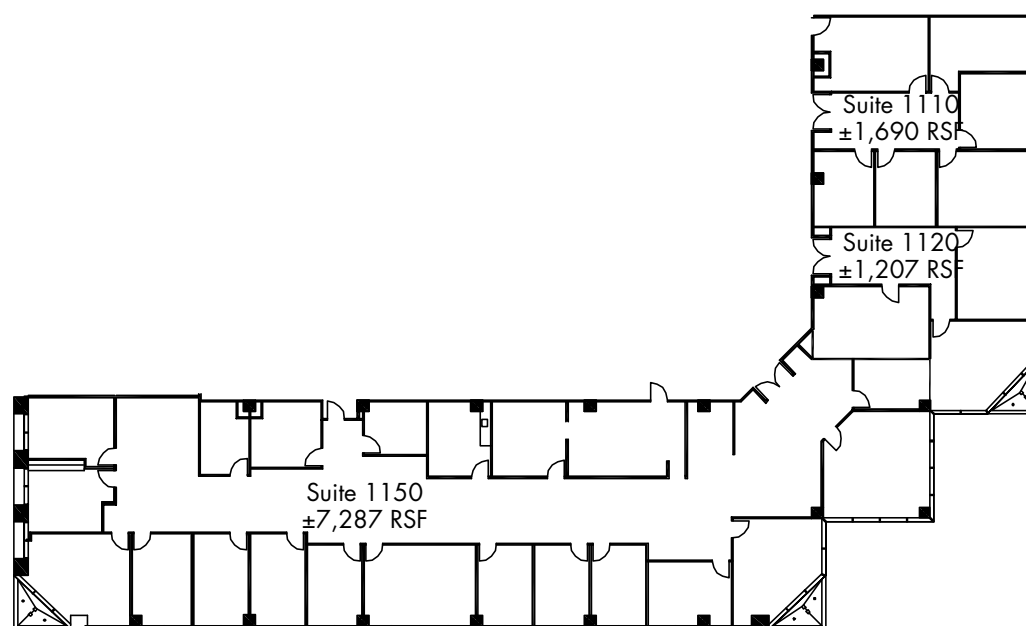


## Tower II:

6 Hutton Centre Drive

Suites 1110, 1120 & 1150

Contiguous to  $\pm 10,184$  RSF



KEY MAP



For more information, please contact:

### Dean Chandler

Lic. 00833627

T 949.725.8515

dean.chandler@cbre.com

### Justin Hill

Lic. 01424426

T 714.371.9230

justin.hill@cbre.com

CB Richard Ellis | Broker Lic# 00409987

3501 Jamboree Road, Suite 100

Newport Beach, CA 92660 | Fax 949.725.8545

LINCOLN  
PROPERTY  
COMPANY

CBRE