



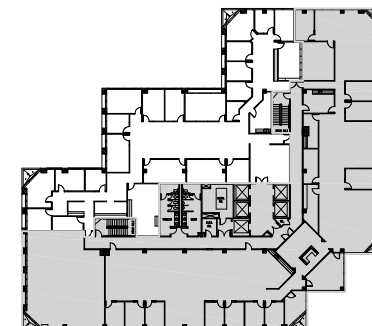
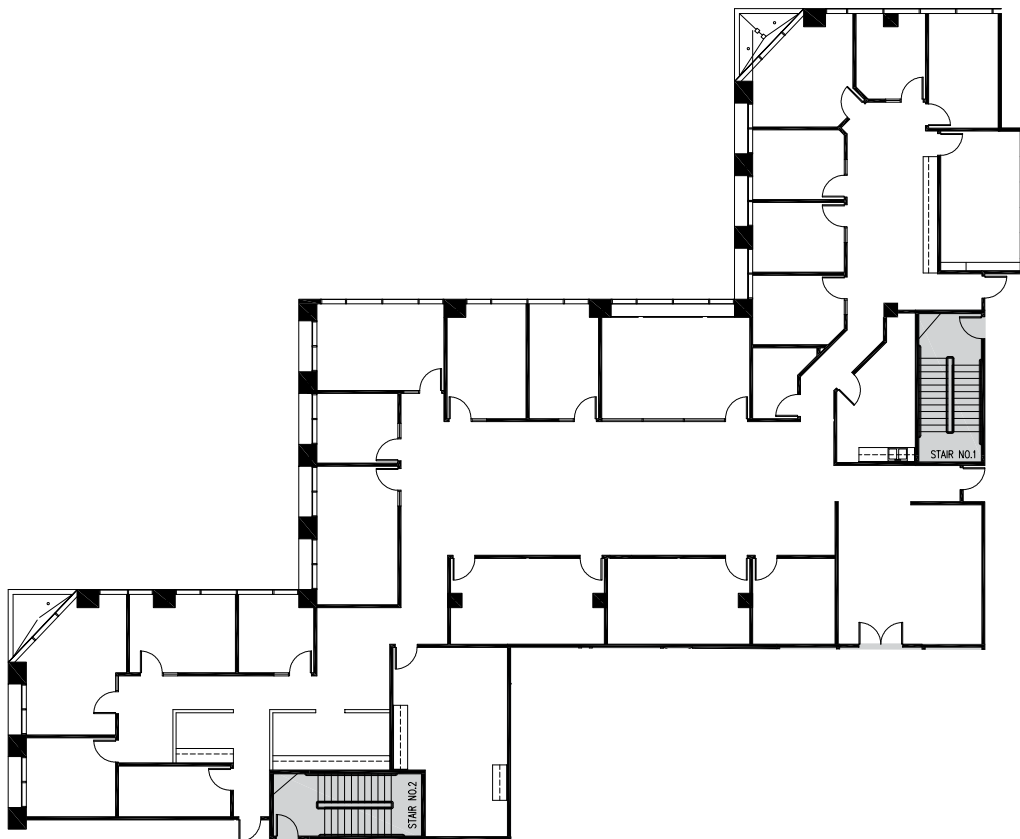
# GRIFFIN TOWERS

5 & 6 HUTTON CENTRE DRIVE | SOUTH COAST METRO

WWW.GRIFFINTOWERS.COM



**Tower II:**  
**6 Hutton Centre Drive**  
**Suite 1050**  
±8,802 Rentable SF



KEY MAP



For more information, please contact:

**Dean Chandler**

Lic. 00833627

T 949.725.8515

dean.chandler@cbre.com

**Justin Hill**

Lic. 01424426

T 714.371.9230

justin.hill@cbre.com

CB Richard Ellis | Broker Lic# 00409987

3501 Jamboree Road, Suite 100

Newport Beach, CA 92660 | Fax 949.725.8545

LINCOLN  
PROPERTY  
COMPANY

CBRE